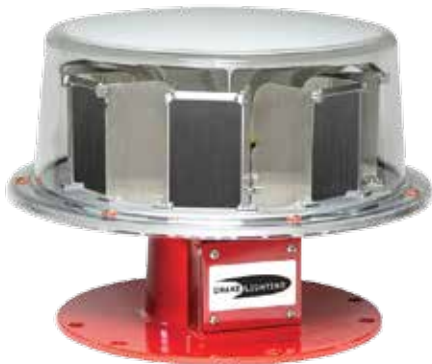


# FAA Style E Obstruction Lighting



## FEATURES

- Two-conductor wire with polarity protection
- One size cable for Beacon, Markers, Photocell
- High power LEDs driven at low current levels for MAX life
- Standard 13 1/4" bolt circle
- Controller **and** power supply are located at ground level
- Includes FAA required monitoring (dry contacts)
- SNMP network alarm (available)

## INCLUSIONS / SPECIFICATIONS

### Beacon

Lamp type	LED, White - Day, Red - Night L-865   L-864
Effective intensity	20,000 cd - Day 2,000 cd - Night
Horizontal coverage	360°
Vertical beam	3°
Power consumption	60 watts Day   20 watts Night
Weight	25 lbs, Power Supply 24 lbs, Flash Head
Dimensions	PS, 15.08" x 17" x 8.46" FH, 19" dia. x 14.25"
Operating temperature	-40°F to 131°F (-40°C to 55°C)
Power requirements	120/240 V AC, 50/60hz Also available in 48V DC
Warranty	5 years (refer to full warrantee statement)

### Side Marker

Lamp type	LED, Red - Night L-810 (F)
Effective intensity	32cd - Night
Warranty	5 years (refer to full warrantee statement)

### L-Shape Bracket

Metal type	Aluminum
Hose Clamps	All stainless steel

### Cable

Type	UV resistant, UL, 2C, 16 AWG
------	------------------------------

### Certified

Intertek	FAAAC 150/5345-43G LED-B-HYBRID-G3
----------	---------------------------------------